



Mellington House Weobley

Mellington House is an attractive 16th century house set in the centre of the black and white timbered village of Weobley.

At Mellington House there is a choice of bed and breakfast or self catering accommodation for short or long visits to the area. All apartments are comfortably furnished with tea and coffee making facilities, free to view TV and the benefit of full central heating. The accommodation has access to the front and rear of the house and there is more than an acre of gardens for guests to enjoy.

The village of Weobley offers many amenities including shops, Post Office, crafts, books, an excellent restaurant and lovely historic inns.

Herefordshire is one of England's most rural counties. The Black Mountains, the world famous bookshop town of Hay on Wye and scenic Wye Valley are all nearby. To the north lie the Long Mynd and the Shropshire Hills around Church Stretton and Ludlow. Golfers will enjoy a variety of spectacular courses and walkers will enjoy discovering the delights of the county.



"The Annexe"

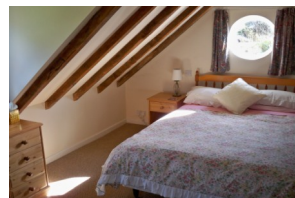
Self contained and on the ground floor, The Annexe comprises a twin bedded room, sitting room, kitchenette / dining area and shower room with toilet.



"The Coach House"



Relaxing accommodation overlooking the large garden.

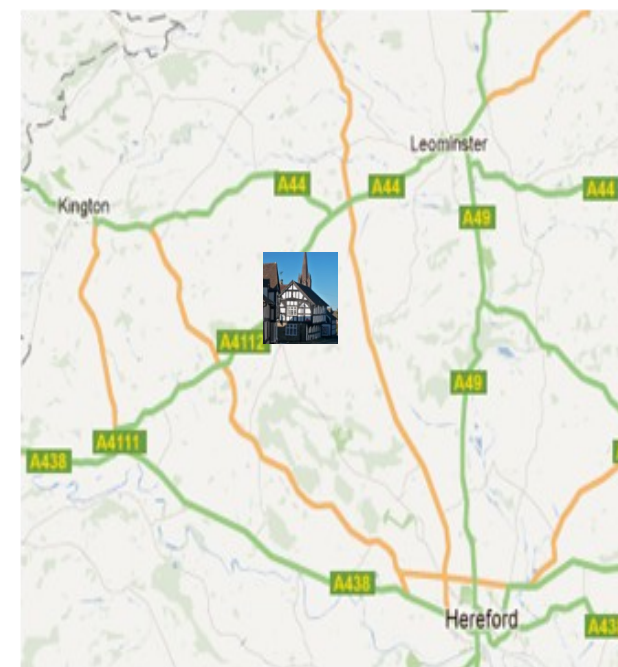


The Coach House has a double bedroom upstairs, and on the ground floor, a shower room with toilet, living / dining room and Kitchen.

"The Hayloft"



Converted into an attractive apartment, The Hayloft exposes a wealth of original oak timbers with mud and wattle construction. Stairs up lead to both double and twin bedded rooms, bath with shower, separate toilet, kitchen / dining area and lounge. Ideal family accommodation.



Mellington House

Broad Street, Weobley, Herefordshire. HR4 8SA

Chris and Alison Saunders: 01544 318537

Website: - www.mellingtonhouse.co.uk

email: - mellingtonhouse@weobley.freemove.co.uk

